

NEW! MSAD 35 Budget Frequently Asked Questions

How many central office positions are there compared to four years ago? How many central office positions are shared with other districts?

Over the past four years the Central Office organization has been realigned to meet the needs of the district. This realignment resulted in **(-1.35)** fewer positions now than we had in 2011 and by sharing administrative positions with neighboring districts, we have greater responsiveness than ever before to meet the district's needs!

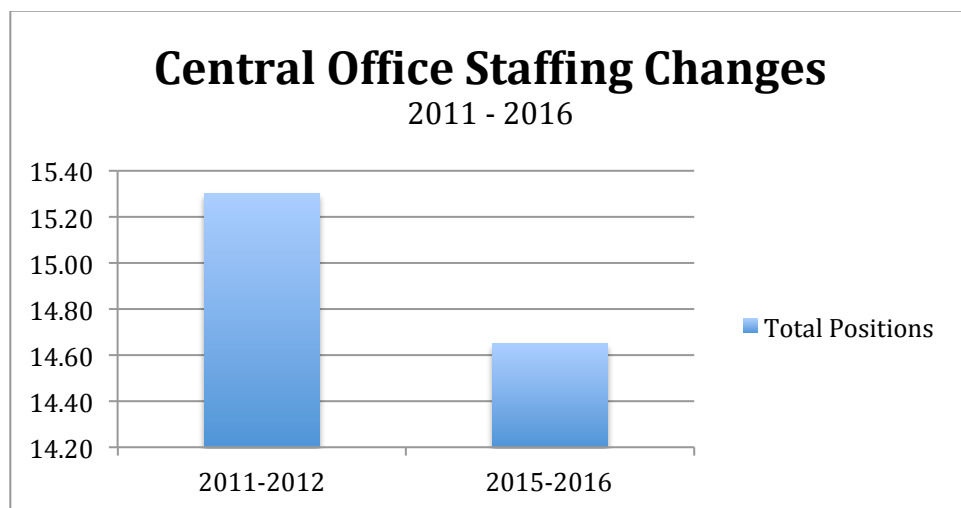
At present, we share 9 administrative positions with neighboring districts.

Next year, there is a recommendation to add a **(+0.5)** Network Manager position which will be shared with SAD 60. There is also a recommendation to *decrease* our Data Manager position from .5 to .2 as we transition these responsibilities to the Administrative Assistant to the Special Services Director.

Due to significant changing dynamics within the Central Office next year, there is also a recommendation to add **(+1.0)** Assistant to the Superintendent to supervise the operations of the district and to learn how to manage the financial systems for the district. This recommendation is in response to the following changes in the central office:

- Laura Millett, the Director of HR will retire on June 4, 2015
- Randy Stewart, Business Manager, will reduce his work time from 1.0 to 0.6 as he prepares to retire
- Hopefully, our Facilities Director, Kevin Moore, will be able to resume his .5 position in the district after a serious health concern this spring

When you take the **(-1.35)** net reduction of positions from 2011 through 2015 and you add in the recommended changes for next year, the central office administrative team will still be **(-.55)** positions *less* than we had in 2011. The chart below shows the net change in central office positions from 2011 – 2016. A detailed list of the reconfigured central office positions can be found on the next page.



NEW! MSAD 35 Budget Frequently Asked Questions

Central Office Staffing Changes 2011 ~ 2016

<u>2011-2012</u>	<u>2014-2015</u>	<u>Change</u>
1 Superintendent	1 Superintendent	0
1 AA to the Supt.	1 AA to the Supt.	0
1 Director of Instruction	.5 Director of Teaching and Learning*	(-0.5)
1 AA to the Dir. of Instruction	0 AA to the Dir. of Instruction	(-1.0)
0 Director of Human Resources	.8 Director of Human Resources	(+0.8)
1 Business Manager	1 Business Manager	0
1 Bookkeeper	1 Accounting Manager	0
1 Accounts Payable Specialist	.8 Accounts Payable Specialist	(-0.2)
.8 Payroll Specialist	.8 Payroll Specialist	0
1 Director of Facilities	.5 Director of Facilities*	(-0.5)
.5 Groundskeeper/Custodian	.5 Groundskeeper/Custodian*	0
1 Director of Transportation	.5 Director of Transportation*	(-0.5)
0 Bus Maintenance Foreman	.4 Bus Maintenance Foreman*	(+0.4)
1 Special Services Director	1 Special Services Director	0
1 AA to the Special Service Director	.8 AA to the Special Service Director	(-0.2)
1 Technology Director	.5 Technology Director*	(-0.5)
0 Technology Network Manager	.5 Technology Network Manager*	(+0.5)
0 Technology Project Manager	.5 Technology Project Manager*	(+0.5)
.5 Data Manager (was in AA @ MHS Guidance)	.5 Data Manager	0
1 Adult Education Director	.6 Adult Education Director**	(-0.4)
.5 Food Service Director	.5 Food Service Director	0
0 Director of Communications	.25 Director of Communications	(+0.25)
<i>2011~2015 Net Change in Central Administration Positions:</i>		(-1.35)

* Shared position with SAD 60

** Shared position with Kittery

The Changing Dynamics in the Central Administration for 2015-16:

- The Director of HR, Laura Millett, will be retiring on June 4, 2015
- Business Manager, Randy Stewart, will reduce his work time from 1.0 to 0.6 [Net change of: (-0.4)]
- Hopefully our Facilities Director, Kevin Moore, will be able to resume his .5 position in the district after a serious health concern

Recommendations in Central Administration Positions for 2015-16:

- Add a (+0.5) Network Manager*
- Restructure the Data Manager position from 0.5 to 0.2 [Net change of: (-0.3)]
- Add (+1.0) Assistant to the Superintendent to manage the operations of the district and to learn how to manage the financial systems for the district

2011~2016 Net Change in Central Administration Positions: (-0.55)

NEW! MSAD 35 Budget Frequently Asked Questions

Will the new bus maintenance garage take up parking spaces and playing fields at the middle school?

Currently four of the district's buses park overnight along the side of the middle school building and three additional district buses park close to one of the metal storage buildings behind the middle school during the winter months. The site plan for the new bus garage calls for tearing down the two metal storage buildings located behind the middle school and siting the new bus garage where the two metal buildings are located now.

Much care and consideration has been given to not infringe upon current staff or community parking spaces on the middle school campus during school times. Bus drivers will have the district's buses on the road at approximately 6:30 a.m. daily and will return to the bus garage at approximately 4:00 - 4:30 p.m. daily. During the school day, the plan is to have the buses not requiring service to park in the lower parking lot of MHS.

We have also given much thought to maintaining the playing fields at the rear of the middle school campus for our students and our community. The softball field and its fence closest to the new bus garage will be moved approximately 30 feet due south to allow for a safer distance for fly foul balls to fly freely away from the vehicles. Since the softball field was originally designed for high school baseball, there is ample room for the softball players to play without hindrance in the new space.

During special off hour usage of the middle school campus when parking is at a premium for events (such as for Little Hawks' games against Noble or during our middle school's Open House meetings for parents) our buses will be relocated to Marshwood High School overnight.

One of the upgrades to our fields will be the removal of the cracked asphalt surface on the running track. Compacted stone dust will be added to the track surface and maintained annually to allow for safer and smoother walking or running on the track for many years to come!

Will the afternoon PreK or K classes be cancelled because of the new early release weekly schedule next year on Thursdays?

There will be both morning and afternoon PreK and K classes every day, five days per week next year!

There will be morning and afternoon PreK and K classes of 2 hours and 45 minutes on Mondays, Tuesdays, Wednesdays and Fridays. On Thursdays there will be morning and afternoon PreK and K classes of 2 hours 20 minutes. As a result of this new schedule, there will be a *net gain* of instruction for our PreK and K students of 50 minutes per week!